

Shockwave X Powered by Bonsai Intelligence

Autonomy built for real orchard work



The OMC Shockwave X with Bonsai Intelligence automates nut tree shaking so growers can get more done with less. Bonsai's vision-first AI helps the shaker understand its surroundings, navigate tight rows, and work safely and efficiently. Built for dust, debris, vibration, and low-visibility conditions, Bonsai Intelligence learns from every mission, making each deployment smarter than the last.

45%
decrease in operating costs



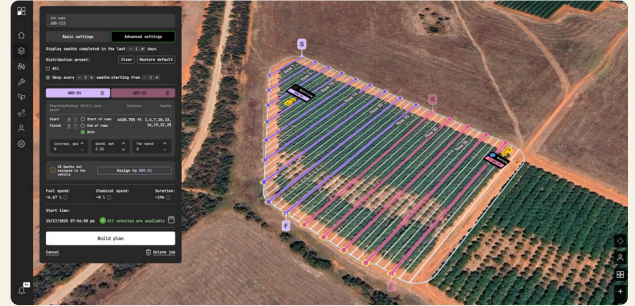
Visionsteer uses automotive-grade COTS hardware to handle harsh conditions without breaking the bank

Top Benefits

- Run multiple machines per operator to boost productivity.
- Harvest faster (up to 9 trees/min) with intelligent skip logic that avoids small, dead, or missing trees.
- Works day, night, and in low visibility for maximum uptime.
- Operates without GPS or RTK in any block.
- Built rugged for harsh, real-world orchard conditions.

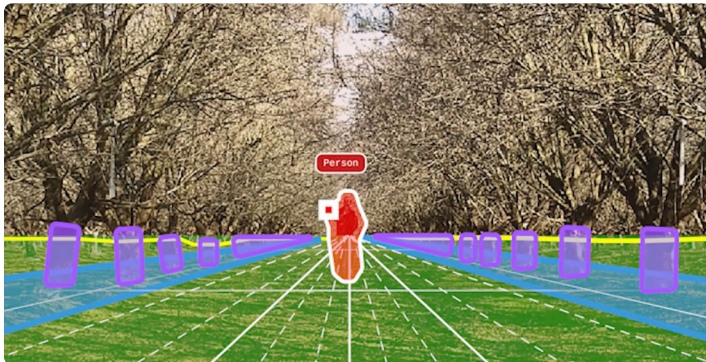
Unify people, equipment, and jobs

Bonsai Pilot is a cloud-based platform that lets growers plan, monitor, and manage autonomous operations from a single dashboard. Automated routing, job execution, real-time progress tracking, and clear reporting help streamline work, reduce downtime, and keep the entire farm moving in sync.



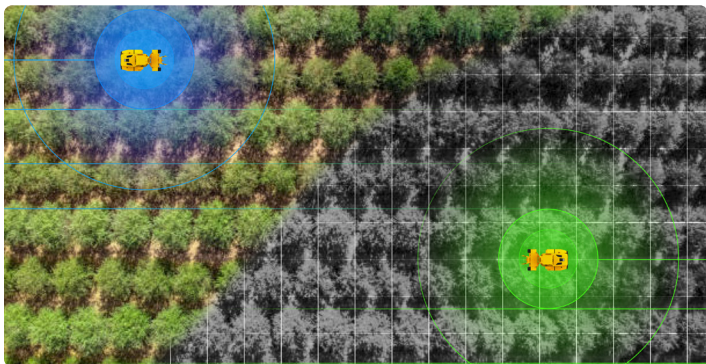
Smarter, safer autonomy

Bonsai Autonomy uses vision-based AI to understand every detail of the orchard—identifying in-row obstacles, leaning trees, irregular trunks, and variable sizes. It pinpoints the optimal shake location and adjusts the shake head automatically, knowing exactly when to stop, go, and work safely. The result: higher utilization and faster completion across large acreage.



Built for 24/7 orchard conditions

Dust, low light, rough terrain, changing weather—Bonsai Intelligence handles it all. Its vision system cuts through dust and is resilient to vibration caused by shaker dynamics and falling debris from shaking trees. It stays reliable in the harshest orchard environments, keeping operations running day and night for maximum uptime.



No tech constraints

Whether or not GPS or cellular coverage is available, Bonsai Autonomy keeps working. It stays focused, never fatigues, and provides continuous 360° vision day or night—delivering consistent, dependable performance even in remote blocks.



Autonomy for the toughest environments

Bonsai Intelligence brings a practical, proven step forward in orchard management—reducing costs, boosting productivity, and increasing reliability across the operation. Contact us for our ROI calculator and to discuss pricing for your farm.

bonsairobotics.ai